



VISOR

ENHANCING VISION

PRODUCT SHEET

ENHANCE CAPTAIN'S FIELD OF VISION

Introducing our cutting-edge top and surround view vision system, the ultimate solution for enhanced deck visibility. Strategically mounted on the top of workboats and CTVs, these innovative cameras provide captains with a comprehensive and all-encompassing view, effectively eliminating blind spots on deck. This significantly enhances safety measures and reduces risks during human operations.

With our advanced technology, captains can navigate with increased confidence and dock more accurately, knowing their field of vision is complete and unobstructed.



MAKE USE OF OUR DISTANCE LINES FOR ACCURATE MANOEUVRING

The system includes a dedicated **display** in the bridge that displays this fused panoramic view, completed with **distance markers at 5m and 10m** intervals to support in precise manoeuvring.

FEATURES

BIRD'S-EYE VIEW



Get a complete overhead view of the entire deck. For added precision, distance lines are projected to assist with accurate maneuvering.

24/7 RECORDINGS



Conduct a review of specific incidents after they occur or use the information for training new crew members.

VIDEO STORAGE



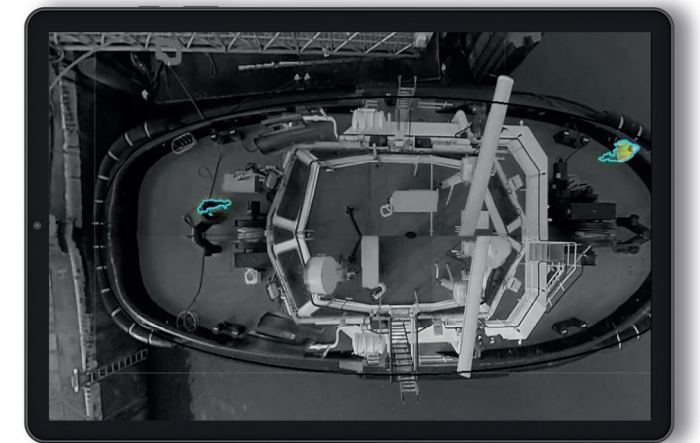
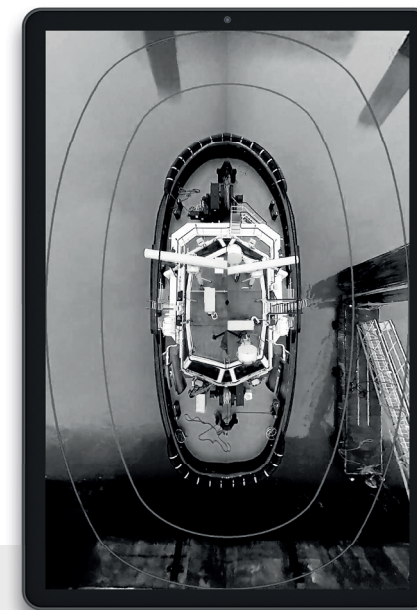
Save, download and manage the video recordings through our dotOcean cloud software.

Enhance safety with our NEW Feature:

MOTION HIGHLIGHTING



Identify and highlight operations on deck with a colored overlay on the bodies of people on deck, making them instantly visible.



VISOR

BENEFITS

The bird-eye vision enables captains to **oversee the entire deck and surrounding waters**, significantly enhancing safety and foreseeing collision avoidance support.

Thanks to the on deck motion highlighting and comprehensive data capture, **the safety of tugboat operations and crew can be significantly improved!**

With a more detailed surround vision captains can navigate with greater confidence and accuracy, leading to safer and more efficient operations.

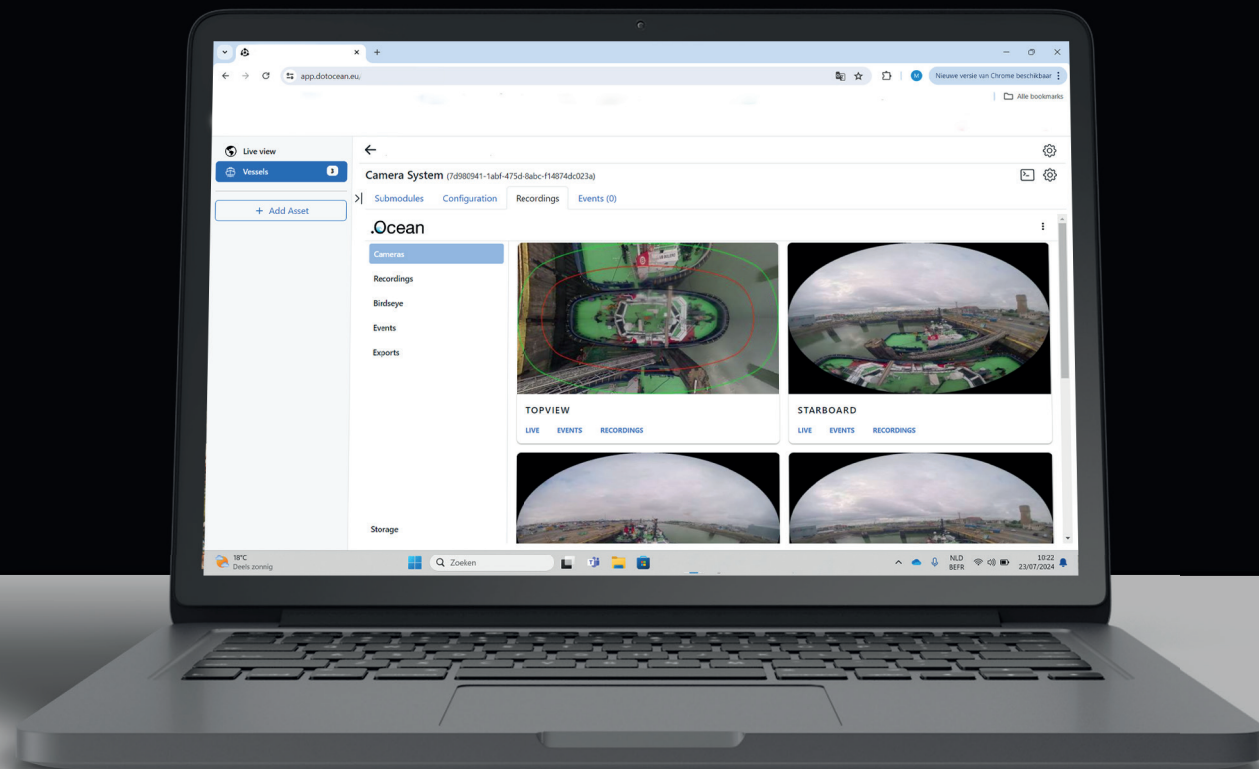
Our dotOcean cloud software allows videos to be stored and incidents to be saved, enabling operations to improve through thorough incident analysis.





INTERACTIVE MAPPING

Through our dotOcean Cloud, all recorded footage can be viewed and downloaded via a secure web portal accessible from any internet-connected device, whether onboard the vessel or remotely. Our cloud platform provides an overview of all operational vessels on an interactive map, displaying their real-time AIS positions.



TECHNICAL SPECIFICATIONS

GENERAL

Cameras

2x 9MP fish-eye cameras
Power over Ethernet (PoE)
IP66, IK10
Operating temperature: -40 °C to +50 °C

Display

27" diagonal
Outer dimensions: 374 mm x 674 mm
25W
9-33VDC (230VAC adapter can be provided upon request)
5m wire to remote monitor dimmer

Onboard computer

Dimensions (WxHxD): 240 x 82 x 267 mm
300W
12-48VDC (230VAC adapter can be provided upon request)
Operating temperature: from -40 to 50°C
Storage: 4 TB (standard), 8 TB (option), 15 TB (option)
Redundant storage for highly critical data can be provided as an option

Monthly Data Limit

10 GB monthly data limit for remote video access
+ €25 / GB additional data

ONBOARD STORAGE

The Visor system continuously processes and records both the bird's-eye view and the surround view of the deck, along with the port and starboard perspectives. This comprehensive processing offers real-time insight and support to the captain. The recording capability allows for detailed post-incident reviews and provides valuable training material for new tugboat crew members.

dotOcean Cloud

All recorded footage can be viewed and downloaded via a secure web portal accessible from any internet-connected device, whether onboard the vessel or remotely. This feature is integrated into a platform that displays vessels in operation on an interactive map, showing their real-time AIS positions.

For more information about the installation and specifications. Read our technical and installation sheet.
Visit our website for more information
www.visor.dotocean.eu

dotOcean NV

WWW.DOTOCEAN.EU

BELGIUM

